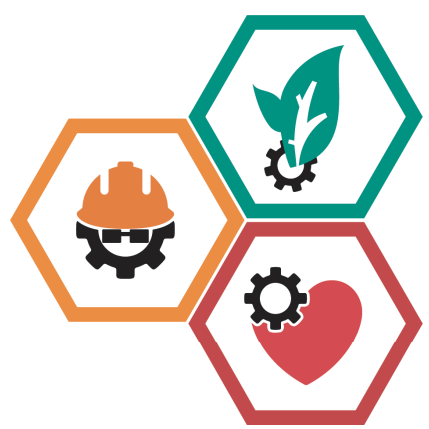


Connect & Control Technologies



Environment, Safety and Health Policy

Consistent with the ITT way, Connect and Control Technologies (CCT) embraces environment, safety and health as an essential element of our corporate culture. We are committed to creating a safe and healthy working community for ourselves, customers and neighbors, while preserving the integrity of our environment. As such, every CCT employee has the authority and responsibility to stop any task when there is reasonable belief that it poses imminent risk of death, serious injury, or significant environmental degradation.

Through our integrated management system, employee management, and leadership commitment we will:

INTEGRATE: “Every planning process encompasses a review of the ESH impact.”

- Ensure ESH is integrated into business decisions such as product design, manufacturing and distribution processes that will reduce ESH risks, improve performance and promote environmentally sustainable practices.

COMMUNICATE: “All our people and stakeholders have an understanding of ESH hazards and risk that affect our business.”

- Train, inform and motivate our employees on safe work performance to institutionalize ESH values throughout the company and stress personal accountability in promoting a positive “Safety Culture” both on and off the job.

COMPLY: “Our work activities achieve compliance with all relevant legislation.”

- Comply with and or exceed all applicable ESH regulatory requirements, best management practice as well as customer, community, and other company specific requirements.

SEEK CONTINUAL IMPROVEMENT: “ITT CCT is recognized for ESH excellence.”

- Establish and monitor ESH goals and objectives and report on progress. Commit to continual improvement of enhancing environmental performance and reducing potential ESH impact of our activities by focusing on the health, safety and productivity of our employees and processes.

SUSTAIN: “We have found and maintained the perfect balance of people, planet and profit.”

- Eliminate or minimize environmental impacts, including waste, emissions, and other discharges through the efficient use of our natural resources and prevention of pollution. Reduce the consumption of natural resources and energy.

Ryan Flynn
President
Connect & Control Technologies

George Ash
Operations Manager, Orchard Park
Connect & Control Technologies

Julien Ollivierre
EHS&S Executive Director
Connect & Control Technologies



ITT